

Introduction

The researchers collaborated with first year sociology faculty to extend library support and information literacy instruction into the learning management system (Sakai). The goals of the project were:

- Summative assessment of student learning following study of a library module, benchmarked using pre and post test scores against a grading rubric.
- Formative assessment of the library module to guide iterative revision of the lesson content.

Western Libraries

Introduction to Library Research at Western

The D.B. Weldon Library: Arts & Humanities, Social Science, and Information & Media Studies

The Library Module is designed to help you gain the needed skills to effectively identify, evaluate, acquire, and responsibly use information.

This module will help you:

- Become familiar with library services and how to find research assistance
- Effectively search for books and articles
- Evaluate information sources
- Avoid plagiarism and properly cite sources



Explore Module Content:

- ✓ Library Orientation
- ✓ Choosing a Research Topic
- ✓ Developing a Search Strategy
- ✓ Searching for Books
- ✓ Searching for Articles
- ✓ Research Guides
- ✓ Evaluating Sources
- ✓ Citing & Writing
- ✓ Need Help? Contact Us

Methodology

The study was conducted over 3 consecutive semesters with a total of 7 classes. Results include responses from 315 participants, of which 70% were first year students.

Students completed a pre-test to assess baseline knowledge. The library module was then released for viewing. When all pages of the module had been viewed, the post-test became available. Pre & post tests were comprised of 15 multiple-choice questions randomly selected from question pools corresponding to the module learning outcomes.

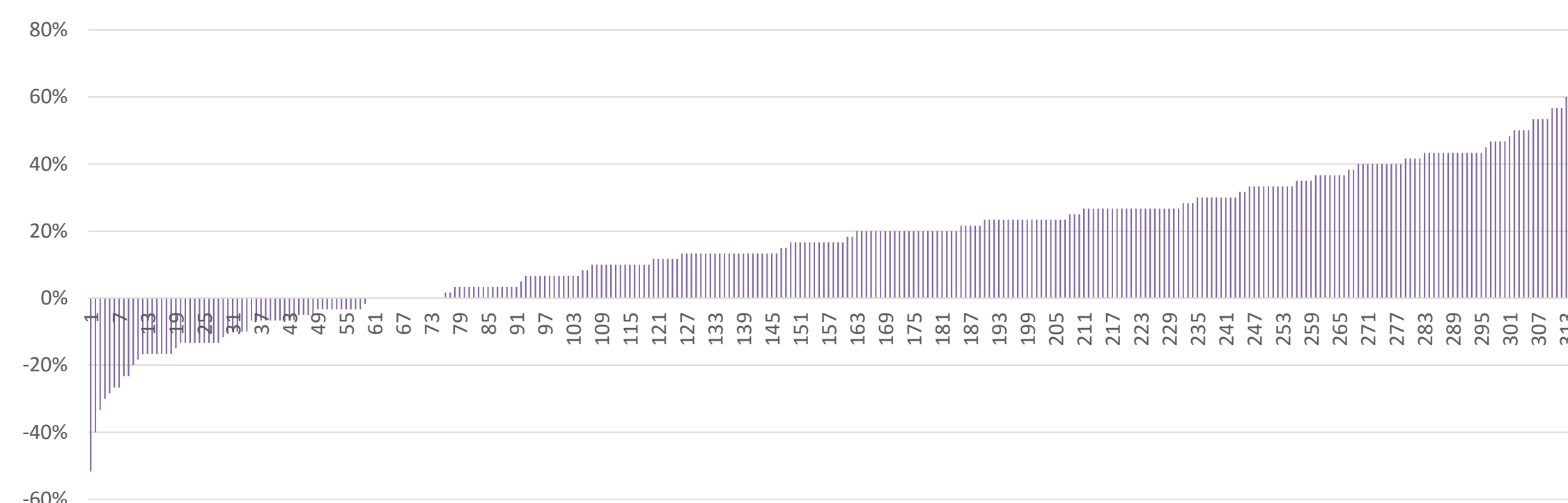
Incremental improvements were made to the module between semesters based on student results.

Pre & Post Test Results - Average of all Sections

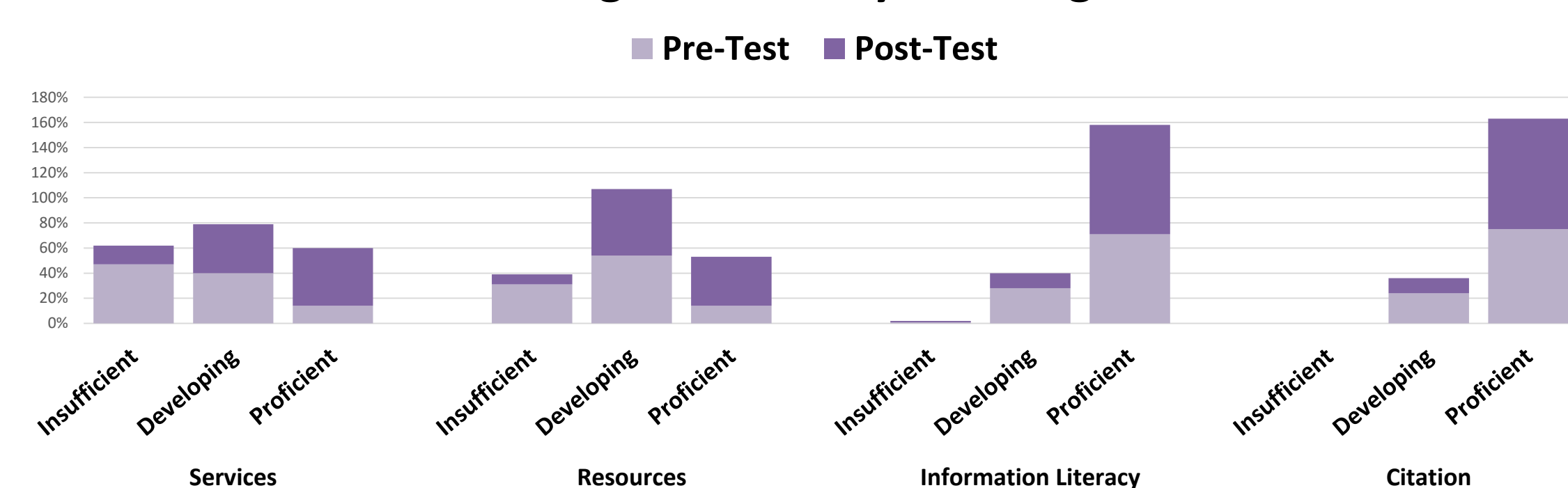
Learning Outcome	Pre-Test Average	Post-Test Average
Services	33.5%	65.2%
Resources	41.4%	61.6%
Information Literacy	71.5%	82.3%
Citation	72.8%	82.3%
FINAL SCORE	56.8%	73.1%

Results

Percent Change in Score by Student – Pre-Test to Post-Test



Percent Change in Score by Learning Outcome



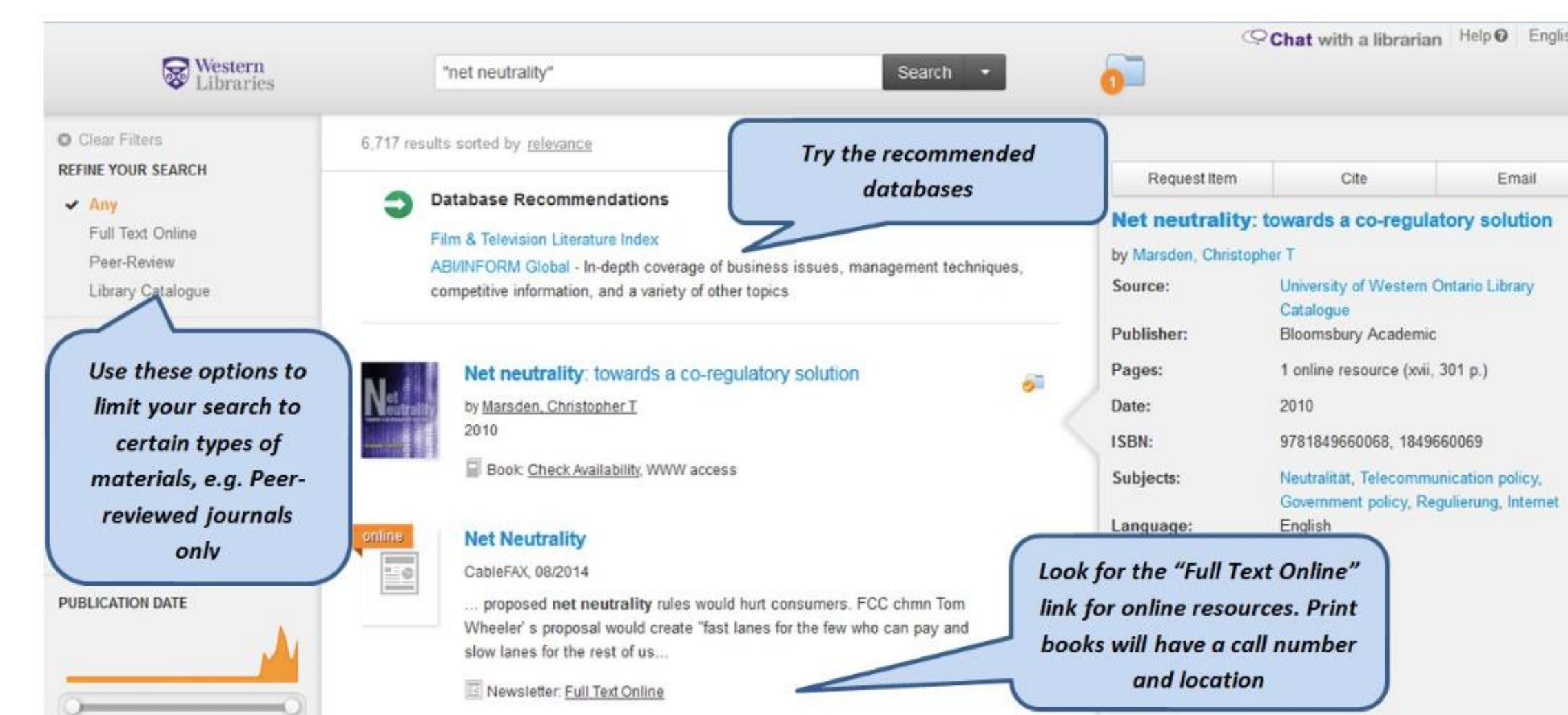
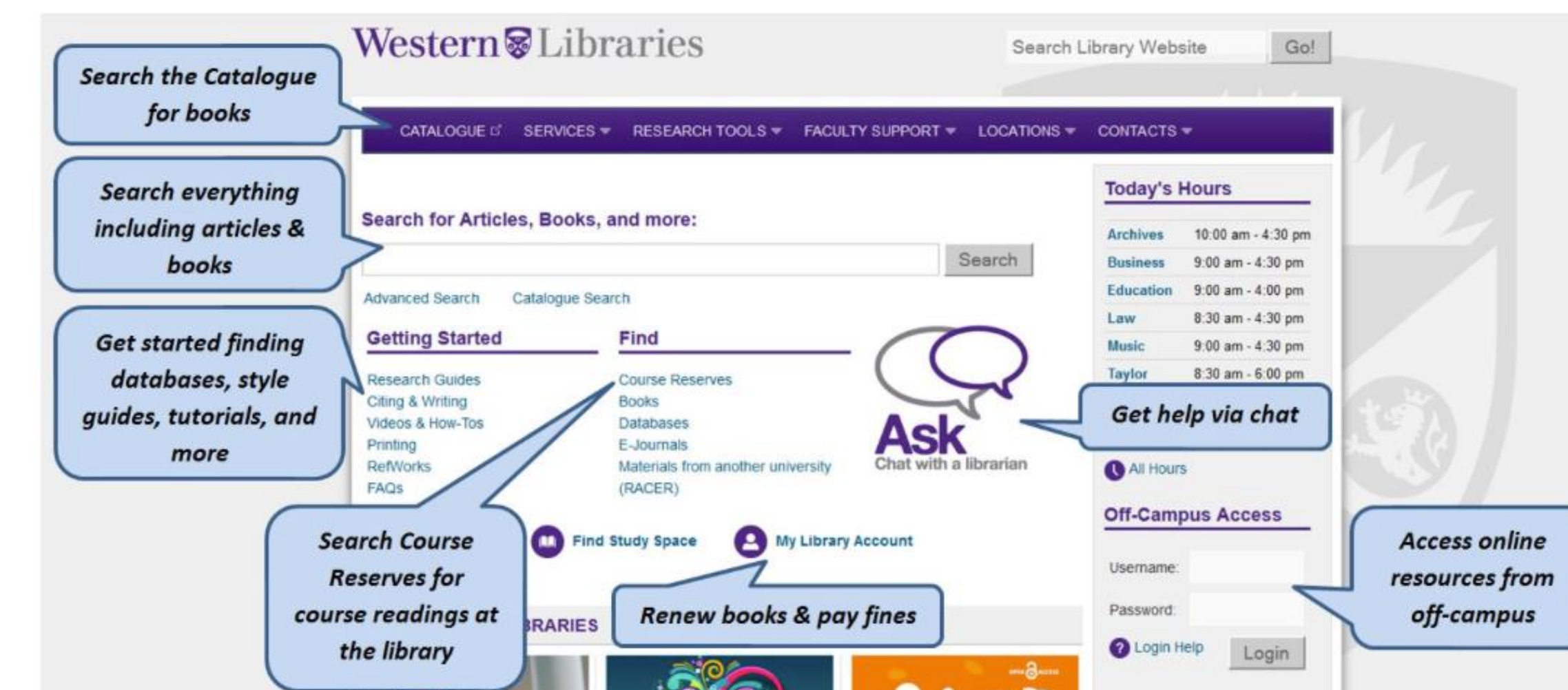
Learning Outcomes

- Questions were organized into 4 learning outcomes and assessed against a rubric categorizing scores as “insufficient”, “developing”, or “proficient”.
- For all learning outcomes, 50% or more of students showed improvement in the post-test.
- The number of students considered “proficient” in each learning outcome increased between 13% and 32%.

Observations

- Instructors have observed an improvement in essay quality since the introduction of the library module.
- Participation rates averaged 14% when no grade was assigned for completion of pre & post tests. Participation rose to 78% when a 5% grade was allocated by the instructor.
- Confidence levels rose significantly from pre to post test. Students selected “Not Sure” as the response to 12% of answers in the pre-test, and only 1% in the post-test.
- Questions related to the “best” method to search, particularly questions involving the library catalogue, consistently showed low performance and less improvement from pre to post test.

Module



Student Feedback

I actually really liked the library module! It helped me out a lot when I was searching for the scholarly articles that I used in my essay!

The Library Module was an effective strategy and a refresher for using the online library database. It clarified and entailed useful tips which I utilized in my research. It will definitely further develop my research skills and was overall beneficial. As this was the first time I had an interactive library module, I found it to be important. Thank you.

I think the library module was relatively useful, and I thought that the videos in certain sections helped visually explain the text. If it were possible, I would suggest to other students and friends to take a look at it and try to use it when developing an essay.

	Strongly Agree	Agree	Undecided	Disagree	Strongly Disagree
I have more confidence using library resources after using the library module	28%	47%	13%	4%	1%
The library module made me more aware of the bigger picture of library research in course work	22%	51%	14%	4%	1%
The library module helped me get started with my research	17%	41%	19%	14%	1%
The library module helped me research more strategically/effectively	20%	40%	16%	12%	3%
The library module was organized into sections that made sense to me; I could find the information I needed	26%	35%	20%	7%	3%